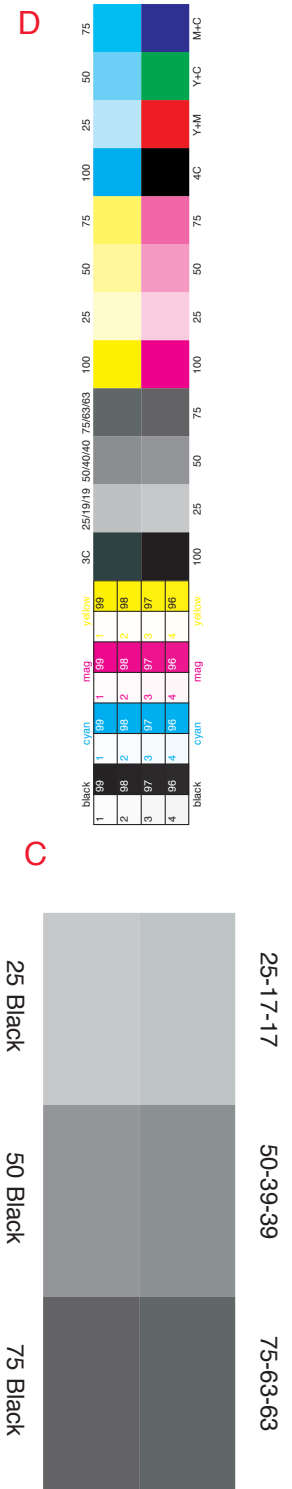
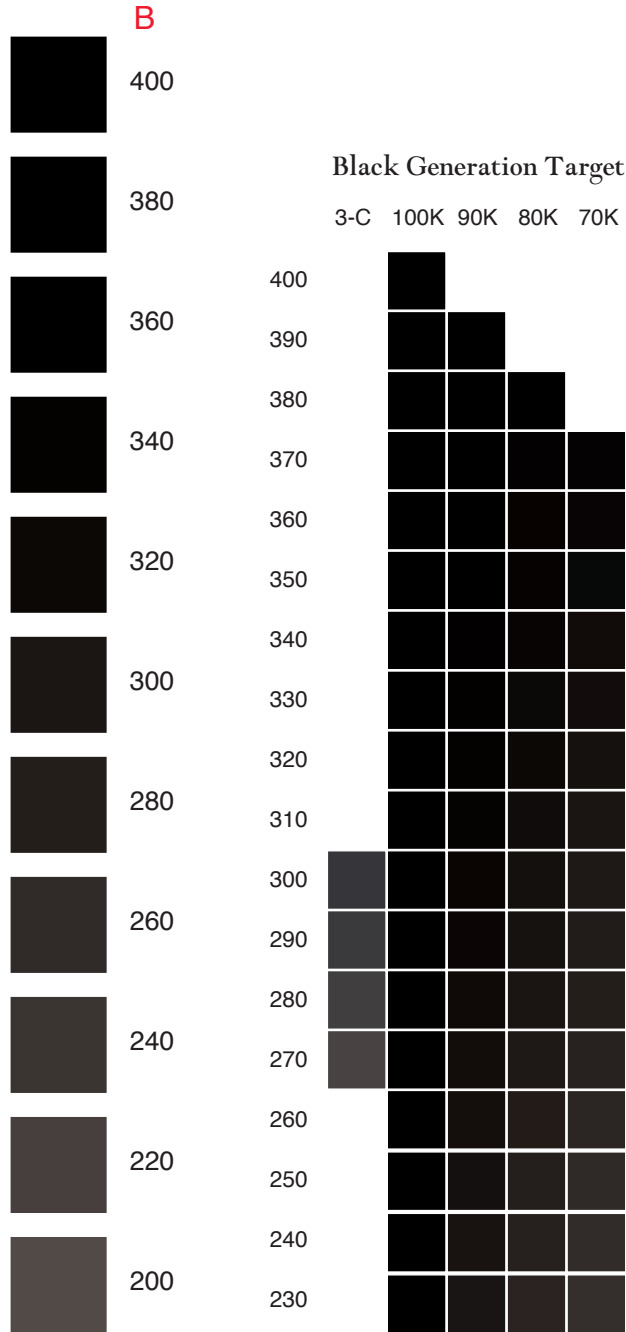
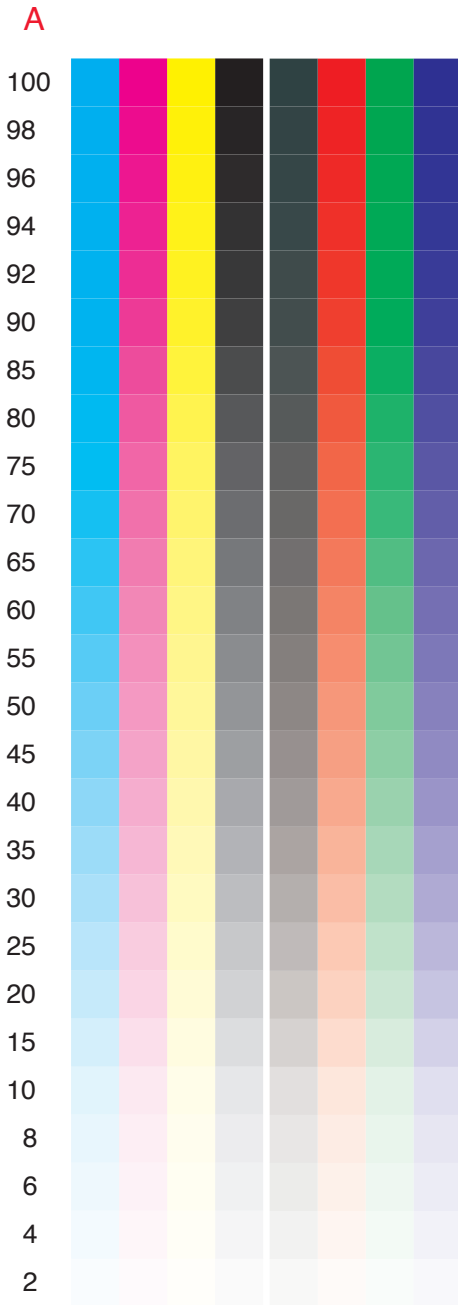


Apache · Professional Imaging
 Frederick Park
 frederick@apache.com



This page was created to assist in the determination of print characteristics.

The printing primary and secondary colors will be evaluated with the Color Patches marked **A**.

A good starting point for the Total Ink Limit will be determined from the Color Patches marked **B**.

The columns next to these patches will further define the Total Ink and Maximum Black Settings.

Gray Balance will be checked using the Color Patches mark **C**.

The Control Strip marked **D**, is an example of Color Bars that can assist in determining and maintaining accurate color control over the course of daily output.